

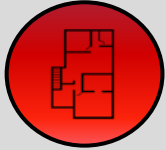
2520 MINNEHAHA AVENUE

2520 MINNEHAHA AVE, MINNEAPOLIS, MN



KRAUS-ANDERSON[®]
Realty Company

SPACE AVAILABLE



Presently 100% leased to
Lincoln International High School

OFFICE BUILDING



20,080 sf office building

LOCATION



Located one block east
of Hiawatha Ave

PARKING



Surface parking lot



AREA AMENITIES



7 miles to the MSP Airport



One block from the Light Rail, running
parallel with Hwy 55



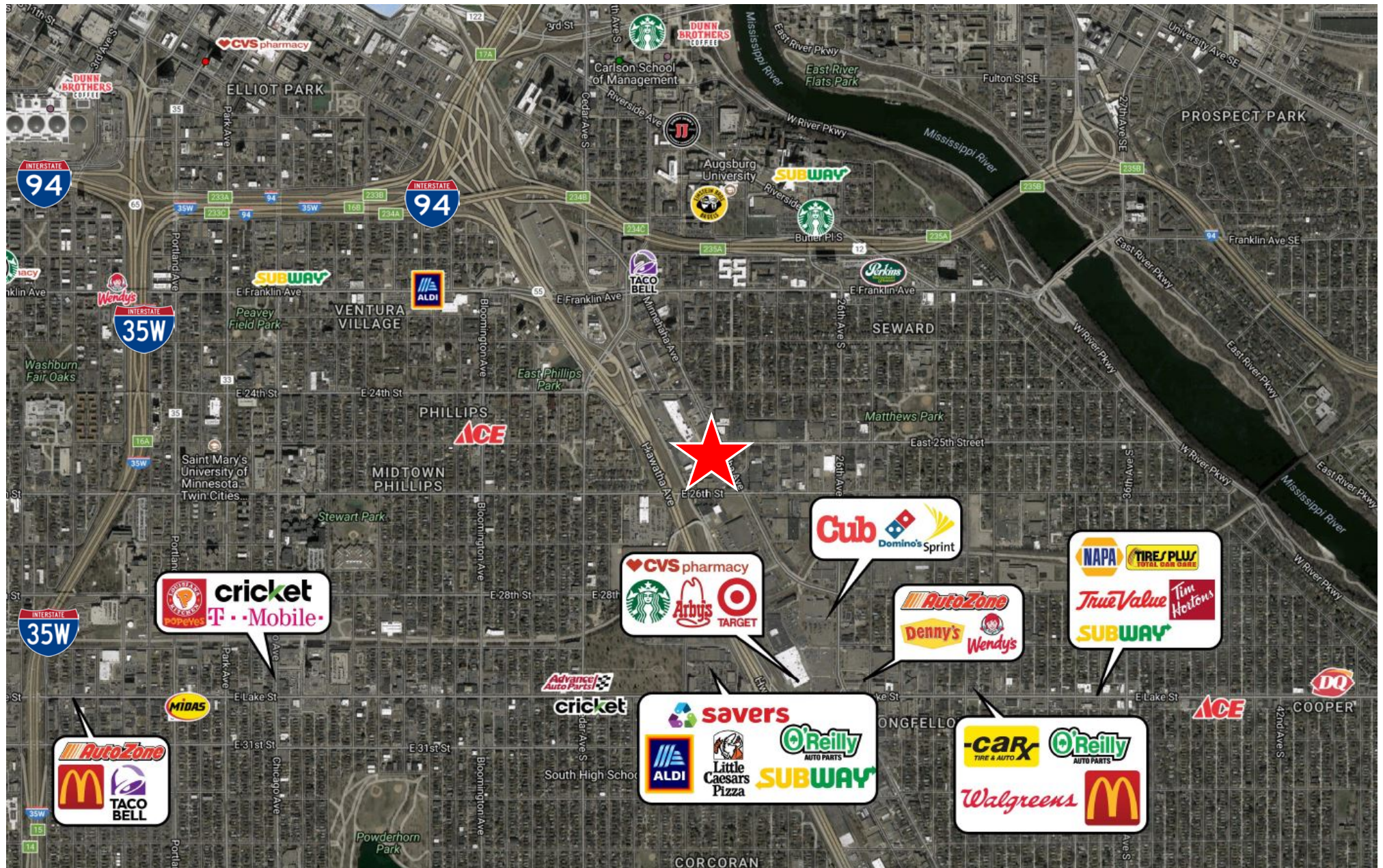
Across Hiawatha Ave from
Cedar and East Phillips Parks



Minutes to and from
Downtown Minneapolis



Retail Aerial

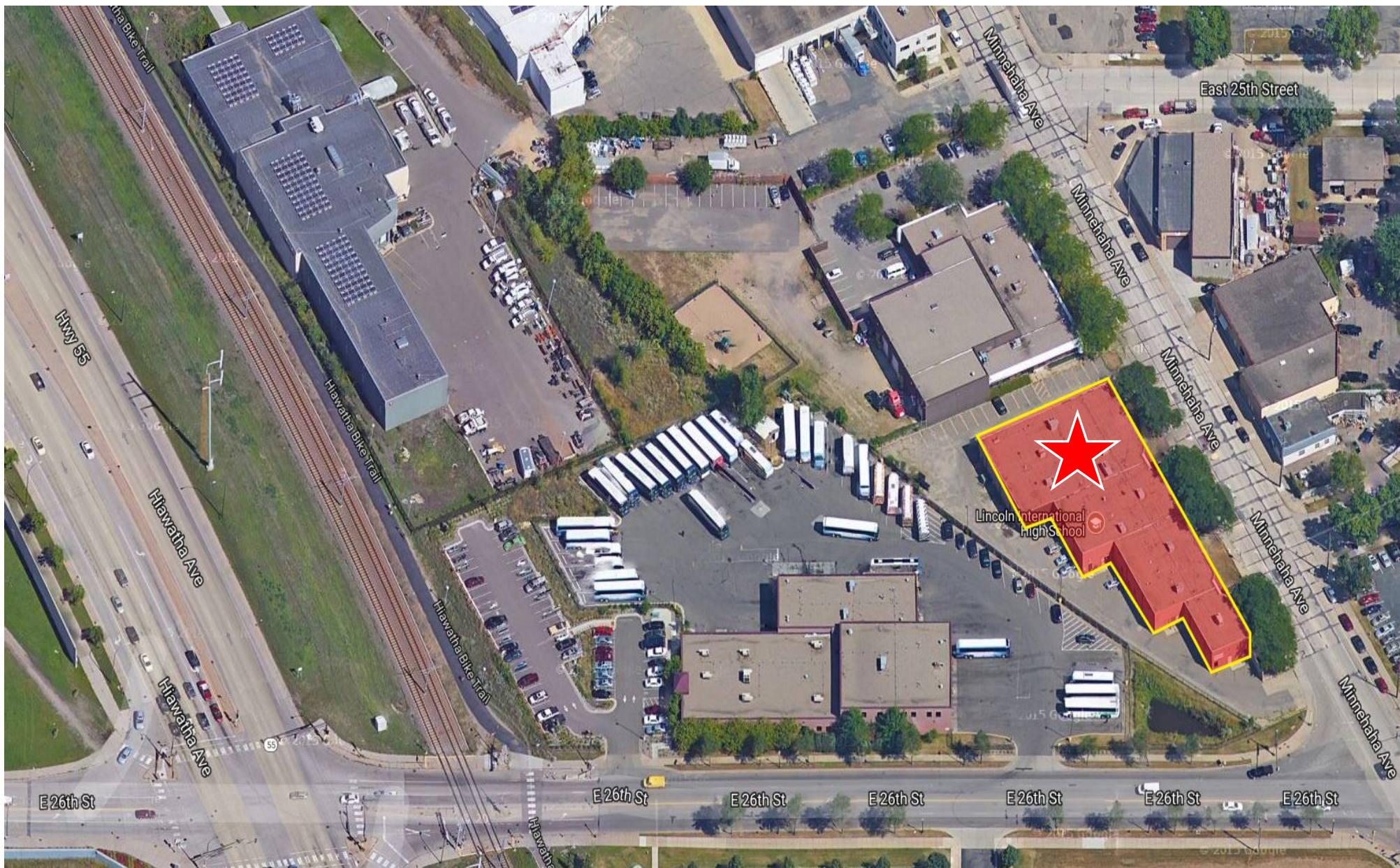


2520 MINNEHAHA AVENUE
MINNEAPOLIS, MN





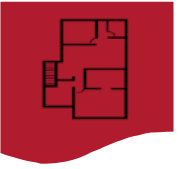
Aerial View



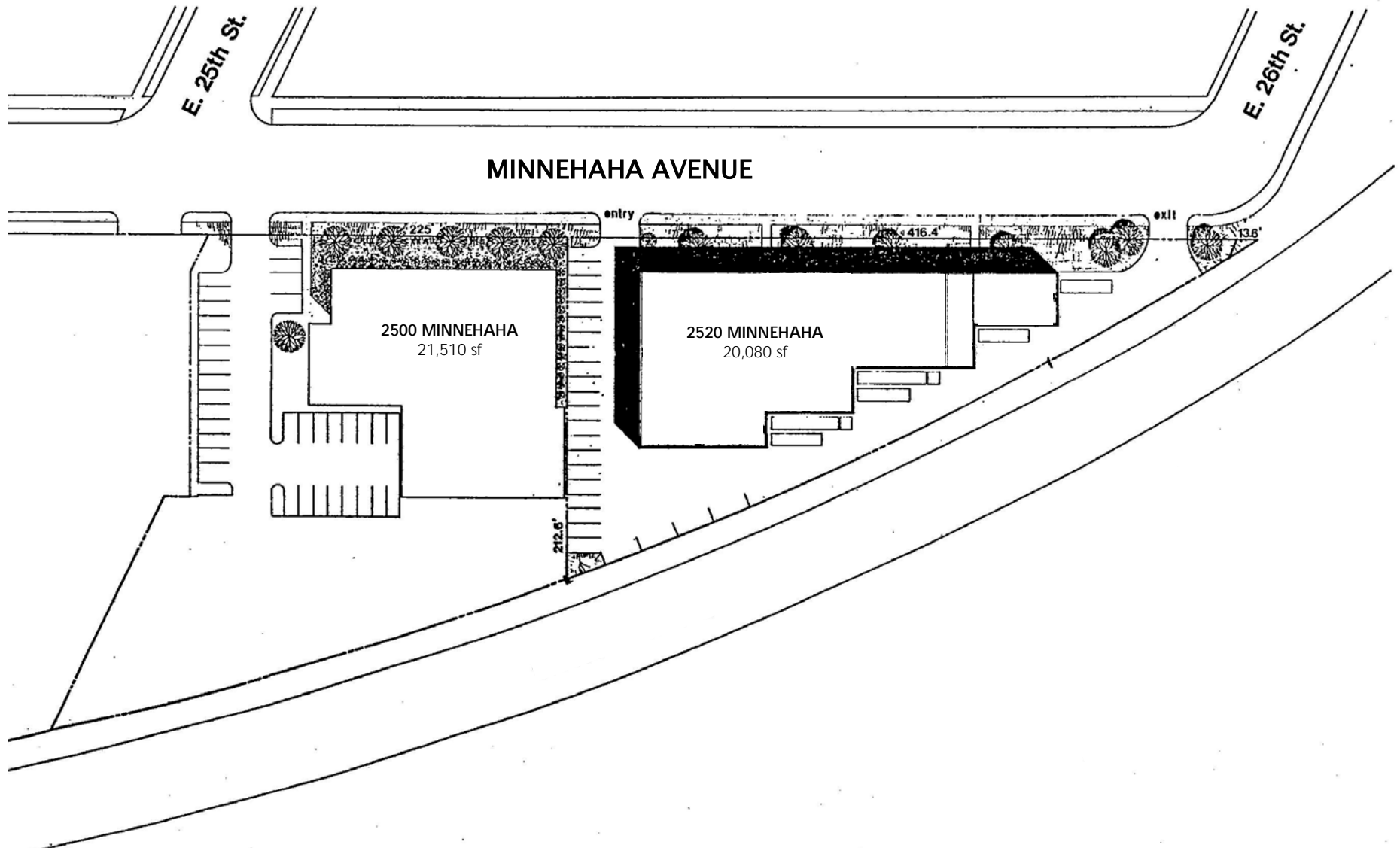
2520 MINNEHAHA AVENUE
MINNEAPOLIS, MN



KRAUS-ANDERSON
Realty Company

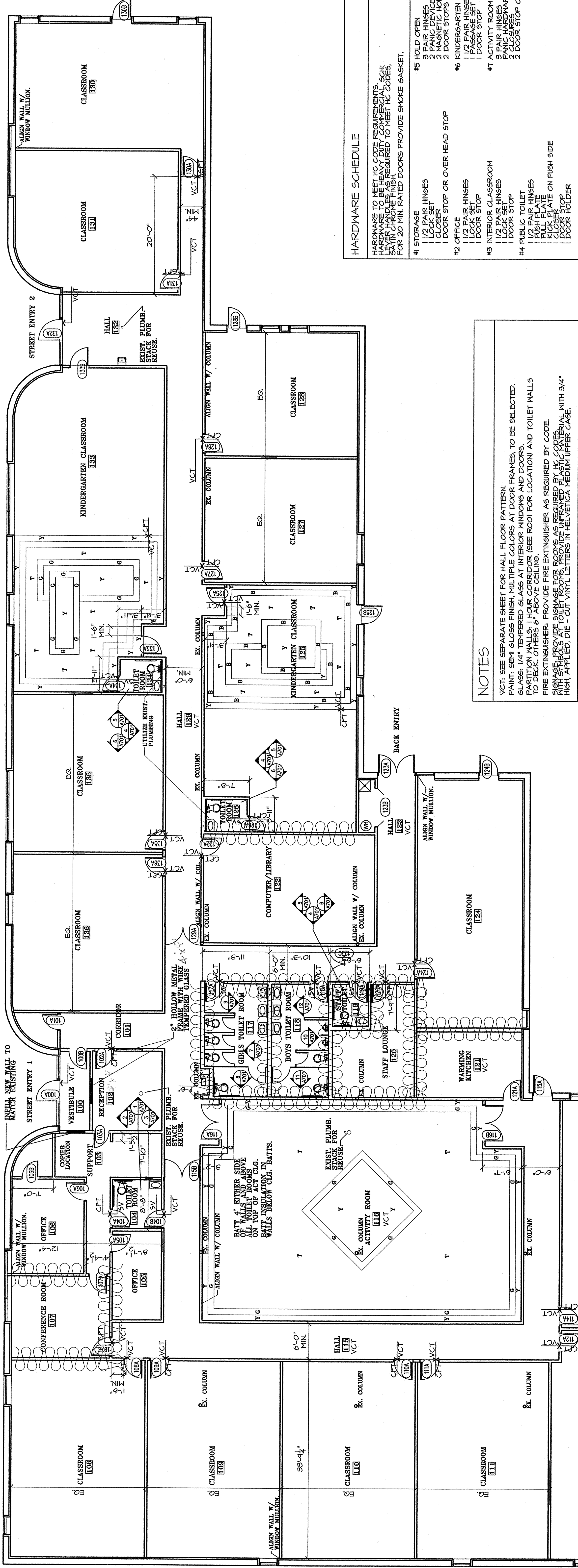
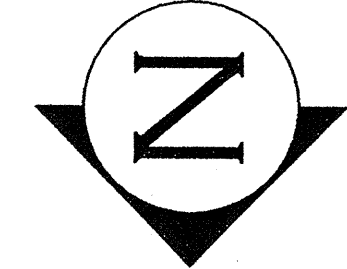


Site Plan



6/15/2018

2520 MINNEHAHA AVENUE
2520 MINNEHAHA AVENUE, MINNEAPOLIS, MN



NOTES

VCT: SEE SEPARATE SHEET FOR HALL FLOOR PATTERN. PAINT: SEE GLASS SCHEDULE FOR FINISHES. TO BE SELECTED. GLASS: 1/4" THERMO GLASS AT INTERIOR WINDOWS AND DOORS. PARTITION WALLS: 1 HOUR CORRIDOR (SEE ROOM FOR LOCATION) AND TOILET WALLS TO DECK. OTHERS 6" ABOVE CEILING.

THE EXTINGUISHER PROVIDE FIRE EXTINGUISHER AS REQUIRED BY CODE. FIRE EXTINGUISHERS TO BE PROVIDED IN ALL TOILET ROOMS. PROVIDE THERMO GLASS AT TOILET ROOMS WITH 3/4" HIGH APPLIED, DIE - CUT VINYL LETTERS IN HELVETICA MEDIUM UPPER CASE.

HARDWARE SCHEDULE

HARDWARE TO MEET IBC CODE REQUIREMENTS. SCHEDULE 1 HARDWARE IS REQUIRED TO MEET IBC CODES. FOR 20 MIN RATED DOORS PROVIDE SMOKE GASKET.

#1 STORAGE	#5 HOLD OPEN
1 LOCK SET	2 PANIC DEVICES WITH LEVERS
1 DOOR STOP OR OVER HEAD STOP	1 LOCK SET
#2 OFFICE	1 DOOR STOP
1 1/2 PAIR HINGES	#6 KINDERGARTEN TOILET
1 DOOR STOP	1 PASSAGE SET (PRIVACY)
#3 INTERIOR CLASSROOM	1 LOCK SET
1 1/2 PAIR HINGES	#7 ACTIVITY ROOM
1 DOOR STOP	1 LOCK SET
#4 PUBLIC TOILET	1 DOOR STOP
1 1/2 PAIR HINGES	1 PANIC HARDWARE
1 FLUSH PLATE	1 DOOR STOP OR OVER HEAD STOP
1 SMOKE PLATE ON FLUSH SIDE	
1 DOOR STOP	
1 DOOR HOLDER	

ROOM FINISH SCHEDULE 1

ROOM	FLOOR	BASE	IN.WALL	EWALL	SWALL	W.WALL	CEILING	FLOOR	REMARKS
NO.	TYPE	MAT'L	THICK	TYPE	MAT'L	THICK	TYPE	MAT'L	THICK
100	VESTIBULE	VCT	RB	PT	PT	PT	ACT	10'-0"	
101	CORRIDOR	VCT	RB	PT	PT	PT	ACT	10'-0"	
102	RECEPTION	OPT	RB	PT	PT	PT	ACT	10'-0"	INCLUDE CLOSET
103	SUPPORT	OPT	RB	PT	PT	PT	ACT	10'-0"	
104	STAFF TOILET	SV	RB	PT/FRPT/FRPT/FRPT/FRPT	PT	PT	ACT	10'-0"	
105	OFFICE	OPT	RB	PT	PT	PT	ACT	10'-0"	
106	CONF. RM.	OPT	RB	PT	PT	PT	ACT	10'-0"	INCLUDE CLOSET
107	CLASSROOM	OPT	RB	PT	PT	PT	ACT	10'-0"	
108	CLASSROOM	OPT	RB	PT	PT	PT	ACT	10'-0"	
109	CLASSROOM	OPT	RB	PT	PT	PT	ACT	10'-0"	
110	CLASSROOM	OPT	RB	PT	PT	PT	ACT	10'-0"	
111	CLASSROOM	OPT	RB	PT	PT	PT	ACT	10'-0"	
112	CLASSROOM	OPT	RB	PT	PT	PT	ACT	10'-0"	
113	MECH. RM.	OPT	RB	PT	PT	PT	ACT	10'-0"	
114	CLASSROOM	OPT	RB	PT	PT	PT	ACT	10'-0"	
115	HALL	VCT	RB	PT	PT	PT	ACT	10'-0"	
116	ACTIVITY RM.	OPT	RB	PT	PT	PT	ACT	10'-0"	CLG. AS HIGH AS POSS.
117	TOILET	SV	RB	PT/FRPT/FRPT/FRPT/FRPT	PT	PT	ACT	10'-0"	
118	STAFF TOILET	SV	RB	PT/FRPT/FRPT/FRPT/FRPT	PT	PT	ACT	10'-0"	
119	STAFF LOUNGE	OPT	RB	PT	PT	PT	ACT	10'-0"	
120	WARM. KIT.	VCT	RB	FRP	FRP	FRP	VACT	10'-0"	W/ HOLD DOWN CLIPS AT CLG.
121	HALL	VCT	RB	PT	PT	PT	ACT	10'-0"	
122	CLASSROOM	OPT	RB	PT	PT	PT	ACT	10'-0"	
123	TOILET	SV	RB	PT/FRPT/FRPT/FRPT/FRPT	PT	PT	ACT	10'-0"	
124	CLASSROOM	OPT	RB	PT	PT	PT	ACT	10'-0"	
125	KIN. CLASSRM.	OPT/ACT	RB	PT	PT	PT	ACT	10'-0"	
126	TOILET	SV	RB	PT/FRPT/FRPT/FRPT/FRPT	PT	PT	ACT	10'-0"	
127	CLASSROOM	OPT	RB	PT	PT	PT	ACT	10'-0"	
128	CLASSROOM	OPT	RB	PT	PT	PT	ACT	10'-0"	
129	HALL	VCT	RB	PT	PT	PT	ACT	10'-0"	
130	CLASSROOM	OPT	RB	PT	PT	PT	ACT	10'-0"	
131	CLASSROOM	OPT	RB	PT	PT	PT	ACT	10'-0"	
132	HALL	VCT	RB	PT	PT	PT	ACT	10'-0"	
133	KIN. CLASSRM.	OPT/ACT	RB	PT	PT	PT	ACT	10'-0"	
134	TOILET	SV	RB	PT/FRPT/FRPT/FRPT/FRPT	PT	PT	ACT	10'-0"	
135	CLASSROOM	OPT	RB	PT	PT	PT	ACT	10'-0"	
136	CLASSROOM	OPT	RB	PT	PT	PT	ACT	10'-0"	

NOTES

PLUMBING: REFER TO FLOOR PLAN FOR LOCATION OF PLUMBING. FIXTURES AND DRINKING FOUNTAINS.

MODIFY EXISTING EXITS AND REGISTERS TO MEET CURRENT CODES. COORDINATE WITH OTHER ELEMENTS OF CEILING GRID SYSTEM (SPRINKLERS AND LIGHTS).

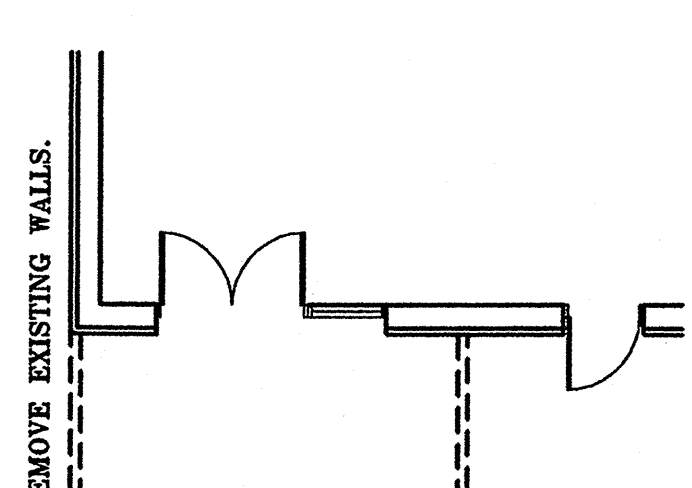
FIRE PROTECTION SYSTEM: MODIFY EXISTING SPRINKLER SYSTEM TO MEET CURRENT CODES. COORDINATE WITH OTHER ELEMENTS OF CEILING GRID SYSTEM (SPRINKLERS AND LIGHTS).

ADD APPROVED FIRE ALARM SYSTEM (LIGHT AND HVAC). ADD APPROVED FIRE ALARM SYSTEM (LIGHT AND HVAC). ADD APPROVED FIRE ALARM SYSTEM (LIGHT AND HVAC).

MARKING: KITCHEN MECHANICAL AND ELECTRICAL PARTITIONS (MAYNAR CORP). TOILET PARTITIONS (MAYNAR CORP). TOILET PARTITIONS (MAYNAR CORP).

ALL SIGNAGE TO BE DARK BLUE WITH A WHITE OR BEIGE TEXT.

Plot Park in Classroom - How will they be used?



BACK ENTRY

COLOR SELECTIONS

VERIFY ALL SELECTIONS WITH PRIMA LAND PRIOR TO ORDERING.

VCT FLOOR (MARKETT EXPRESSIONS) SEE SHEET A201 FOR FLOOR PATTERN

2046 - SINOVER SHELLSOLD (Y)

2049 - CINNABAR (A)

2052 - BOTTLE GREEN AGIA FOREST (G)

2057 - CLAY BELL, SIENNA (Y)

2062 - BOTTLE GREEN AGIA FOREST (G)

2071 - CLAY BELL, SIENNA (Y)

2076 - CLAY BELL, SIENNA (Y)

2081 - CLAY BELL, SIENNA (Y)

2086 - CLAY BELL, SIENNA (Y)

2091 - CLAY BELL, SIENNA (Y)

2096 - CLAY BELL, SIENNA (Y)

2101 - CLAY BELL, SIENNA (Y)

2106 - CLAY BELL, SIENNA (Y)

2111 - CLAY BELL, SIENNA (Y)

2116 - CLAY BELL, SIENNA (Y)

2121 - CLAY BELL, SIENNA (Y)

2126 - CLAY BELL, SIENNA (Y)

2131 - CLAY BELL, SIENNA (Y)

2136 - CLAY BELL, SIENNA (Y)

2141 - CLAY BELL, SIENNA (Y)

2146 - CLAY BELL, SIENNA (Y)

2151 - CLAY BELL, SIENNA (Y)

2156 - CLAY BELL, SIENNA (Y)

2161 - CLAY BELL, SIENNA (Y)

2166 - CLAY BELL, SIENNA (Y)

2171 - CLAY BELL, SIENNA (Y)

2176 - CLAY BELL, SIENNA (Y)

2181 - CLAY BELL, SIENNA (Y)

2186 - CLAY BELL, SIENNA (Y)

2191 - CLAY BELL, SIENNA (Y)

2196 - CLAY BELL, SIENNA (Y)

2201 - CLAY BELL, SIENNA (Y)

2206 - CLAY BELL, SIENNA (Y)

2211 - CLAY BELL, SIENNA (Y)

2216 - CLAY BELL, SIENNA (Y)

2221 - CLAY BELL, SIENNA (Y)

2226 - CLAY BELL, SIENNA (Y)

2231 - CLAY BELL, SIENNA (Y)

2236 - CLAY BELL, SIENNA (Y)

2241 - CLAY BELL, SIENNA (Y)

2246 - CLAY BELL, SIENNA (Y)

2251 - CLAY BELL, SIENNA (Y)

2256 - CLAY BELL, SIENNA (Y)

2261 - CLAY BELL, SIENNA (Y)

2266 - CLAY BELL, SIENNA (Y)

2271 - CLAY BELL, SIENNA (Y)

2276 - CLAY BELL, SIENNA (Y)

2281 - CLAY BELL, SIENNA (Y)

2286 - CLAY BELL, SIENNA (Y)

2291 - CLAY BELL, SIENNA (Y)

2296 - CLAY BELL, SIENNA (Y)

2301 - CLAY BELL, SIENNA (Y)

2306 - CLAY BELL, SIENNA (Y)

2311 - CLAY BELL, SIENNA (Y)

2316 - CLAY BELL, SIENNA (Y)

2321 - CLAY BELL, SIENNA (Y)

2326 - CLAY BELL, SIENNA (Y)

2331 - CLAY BELL, SIENNA (Y)

2336 - CLAY BELL, SIENNA (Y)

2341 - CLAY BELL, SIENNA (Y)

2346 - CLAY BELL, SIENNA (Y)

2351 - CLAY BELL, SIENNA (Y)

2356 - CLAY BELL, SIENNA (Y)

2361 - CLAY BELL, SIENNA (Y)

2366 - CLAY BELL, SIENNA (Y)

2371 - CLAY BELL, SIENNA (Y)

2376 - CLAY BELL, SIENNA (Y)

2381 - CLAY BELL, SIENNA (Y)

2386 - CLAY BELL, SIENNA (Y)

2391 - CLAY BELL, SIENNA (Y)

2396 - CLAY BELL, SIENNA (Y)

2401 - CLAY BELL, SIENNA (Y)

2406 - CLAY BELL, SIENNA (Y)

2411 - CLAY BELL, SIENNA (Y)

2416 - CLAY BELL, SIENNA (Y)

2421 - CLAY BELL, SIENNA (Y)

2426 - CLAY BELL, SIENNA (Y)

2431 - CLAY BELL, SIENNA (Y)

2436 - CLAY BELL, SIENNA (Y)

2441 - CLAY BELL, SIENNA (Y)

2446 - CLAY BELL, SIENNA (Y)

2451 - CLAY BELL, SIENNA (Y)

2456 - CLAY BELL, SIENNA (Y)

2461 - CLAY BELL, SIENNA (Y)

2466 - CLAY BELL, SIENNA (Y)

2471 - CLAY BELL, SIENNA (Y)

2476 - CLAY BELL, SIENNA (Y)

2481 - CLAY BELL, SIENNA (Y)

2486 - CLAY BELL, SIENNA (Y)

2491 - CLAY BELL, SIENNA (Y)

2496 - CLAY BELL, SIENNA (Y)

2501 - CLAY BELL, SIENNA (Y)

2506 - CLAY BELL, SIENNA (Y)

2511 - CLAY BELL, SIENNA (Y)

2516 - CLAY BELL, SIENNA (Y)

2521 - CLAY BELL, SIENNA (Y)

2526 - CLAY BELL, SIENNA (Y)

2531 - CLAY BELL, SIENNA (Y)

2536 - CLAY BELL, SIENNA (Y)

2541 - CLAY BELL, SIENNA (Y)

2546 - CLAY BELL, SIENNA (Y)

2551 - CLAY BELL, SIENNA (Y)

2556 - CLAY BELL, SIENNA (Y)

2561 - CLAY BELL, SIENNA (Y)

2566 - CLAY BELL, SIENNA (Y)

2571 - CLAY BELL, SIENNA (Y)

2576 - CLAY BELL, SIENNA (Y)

2581 - CLAY BELL, SIENNA (Y)

2586 - CLAY BELL, SIENNA (Y)

2591 - CLAY BELL, SIENNA (Y)

2596 - CLAY BELL, SIENNA (Y)

2601 - CLAY BELL, SIENNA (Y)

2606 - CLAY BELL, SIENNA (Y)

2611 - CLAY BELL, SIENNA (Y)

2616 - CLAY BELL, SIENNA (Y)

2621 - CLAY BELL, SIENNA (Y)

2626 - CLAY BELL, SIENNA (Y)

2631 - CLAY BELL, SIENNA (Y)

2636 - CLAY BELL, SIENNA (Y)

2641 - CLAY BELL, SIENNA (Y)

2646 - CLAY BELL, SIENNA (Y)

2651 - CLAY BELL, SIENNA (Y)

2656 - CLAY BELL, SIENNA (Y)

2661 - CLAY BELL, SIENNA (Y)

2666 - CLAY BELL, SIENNA (Y)

2671 - CLAY BELL, SIENNA (Y)

2676 - CLAY BELL, SIENNA (Y)

2681 - CLAY BELL, SIENNA (Y)

2686 - CLAY BELL, SIENNA (Y)

2691 - CLAY BELL, SIENNA (Y)

2696 - CLAY BELL, SIENNA (Y)

2701 - CLAY BELL, SIENNA (Y)

2706 - CLAY BELL, SIENNA (Y)

2711 - CLAY BELL, SIENNA (Y)

2716 - CLAY BELL, SIENNA (Y)

2721 - CLAY BELL, SIENNA (Y)

2726 - CLAY BELL, SIENNA (Y)

2731 - CLAY BELL, SIENNA (Y)

2736 - CLAY BELL, SIENNA (Y)

2741 - CLAY BELL, SIENNA (Y)

2746 - CLAY BELL, SIENNA (Y)

2751 - CLAY BELL, SIENNA (Y)

2756 - CLAY BELL, SIENNA (Y)

2761 - CLAY BELL, SIENNA (Y)

2766 - CLAY BELL, SIENNA (Y)

2771 - CLAY BELL, SIENNA (Y)

2776 - CLAY BELL, SIENNA (Y)

2781 - CLAY BELL, SIENNA (Y)

2786 - CLAY BELL, SIENNA (Y)

2791 - CLAY BELL, SIENNA (Y)

2796 - CLAY BELL, SIENNA (Y)

2801 - CLAY BELL, SIENNA (Y)

2806 - CLAY BELL, SIENNA (Y)

2811 - CLAY BELL, SIENNA (Y)

2816 - CLAY BELL, SIENNA (Y)

2821 - CLAY BELL, SIENNA (Y)

2826 - CLAY BELL, SIENNA (Y)

2831 - CLAY BELL, SIENNA (Y)

2836 - CLAY BELL, SIENNA (Y)

2841 - CLAY BELL, SIENNA (Y)

2846 - CLAY BELL, SIENNA (Y)

2851 - CLAY BELL, SIENNA (Y)

2856 - CLAY BELL, SIENNA (Y)

2861 - CLAY BELL, SIENNA (Y)

2866 - CLAY BELL, SIENNA (Y)

2871 - CLAY BELL, SIENNA (Y)

2876 - CLAY BELL, SIENNA (Y)

2881 - CLAY BELL, SIENNA (Y)

2886 - CLAY BELL, SIENNA (Y)

2891 - CLAY BELL, SIENNA (Y)

2896 - CLAY BELL, SIENNA (Y)

2901 - CLAY BELL, SIENNA (Y)

2906 - CLAY BELL, SIENNA (Y)

2911 - CLAY BELL, SIENNA (Y)

2916 - CLAY BELL, SIENNA (Y)

2921 - CLAY BELL, SIENNA (Y)

2926 - CLAY BELL, SIENNA (Y)

2931 - CLAY BELL, SIENNA (Y)

2936 - CLAY BELL, SIENNA (Y)

2941 - CLAY BELL, SIENNA (Y)

2946 - CLAY BELL, SIENNA (Y)

2951 - CLAY BELL, SIENNA (Y)

2956 - CLAY BELL, SIENNA (Y)

2961 - CLAY BELL, SIENNA (Y)

2966 - CLAY BELL, SIENNA (Y)

2971 - CLAY BELL, SIENNA (Y)

2976 - CLAY BELL, SIENNA (Y)

2981 - CLAY BELL, SIENNA (Y)

2986 - CLAY BELL, SIENNA (Y)

2991 - CLAY BELL, SIENNA (Y)

2996 - CLAY BELL, SIENNA (Y)

3001 - CLAY BELL, SIENNA (Y)

3006 - CLAY BELL, SIENNA (Y)

3011 - CLAY BELL, SIENNA (Y)

3016 - CLAY BELL, SIENNA (Y)

3021 - CLAY BELL, SIENNA (Y)

3026 - CLAY BELL, SIENNA (Y)

3031 - CLAY BELL, SIENNA (Y)

3036 - CLAY BELL, SIENNA (Y)

3041 - CLAY BELL, SIENNA (Y)

3046 - CLAY BELL, SIENNA (Y)

3051 - CLAY BELL, SIENNA (Y)

3056 - CLAY BELL, SIENNA (Y)

3061 - CLAY BELL, SIENNA (Y)

3066 - CLAY BELL, SIENNA (Y)

3071 - CLAY BELL, SIENNA (Y)

3076 - CLAY BELL, SIENNA (Y)

3081 - CLAY BELL, SIENNA (Y)

3086 - CLAY BELL, SIENNA (Y)

3091 - CLAY BELL, SIENNA (Y)

3096 - CLAY BELL, SIENNA (Y)

3101 - CLAY BELL, SIENNA (Y)

3106 - CLAY BELL, SIENNA (Y)

3111 - CLAY BELL, SIENNA (Y)

3116 - CLAY BELL, SIENNA (Y)

3121 - CLAY BELL, SIENNA (Y)

3126 - CLAY BELL, SIENNA (Y)

3131 - CLAY BELL, SIENNA (Y)

3136 - CLAY BELL, SIENNA (Y)

3141 - CLAY BELL, SIENNA (Y)

3146 - CLAY BELL, SIENNA (Y)

3151 - CLAY BELL, SIENNA (Y)

3156 - CLAY BELL, SIENNA (Y)

3161 - CLAY BELL, SIENNA (Y)

3166 - CLAY BELL, SIENNA (Y)

3171 - CLAY BELL, SIENNA (Y)

3176 - CLAY BELL, SIENNA (Y)

3181 - CLAY BELL, SIENNA (Y)

3186 - CLAY BELL, SIENNA (Y)

3191 - CLAY BELL, SIENNA (Y)

3196 - CLAY BELL, SIENNA (Y)

3201 - CLAY BELL, SIENNA (Y)

3206 - CLAY BELL, SIENNA (Y)

3211 - CLAY BELL, SIENNA (Y)

3216 - CLAY BELL, SIENNA (Y)

3221 - CLAY BELL, SIENNA (Y)

3226 - CLAY BELL, SIENNA (Y)

3231 - CLAY BELL, SIENNA (Y)

3236 - CLAY BELL, SIENNA (Y)

3241 - CLAY BELL, SIENNA (Y)

3246 - CLAY BELL, SIENNA (Y)

3251 - CLAY BELL, SIENNA (Y)

3256 - CLAY BELL, SIENNA (Y)

3261 - CLAY BELL, SIENNA (Y)

3266 - CLAY BELL, SIENNA (Y)

3271 - CLAY BELL, SIENNA (Y)

3276 - CLAY BELL, SIENNA (Y)

3281 - CLAY BELL, SIENNA (Y)

3286 - CLAY BELL, SIENNA (Y)

3291 - CLAY BELL, SIENNA (Y)

3296 - CLAY BELL, SIENNA (Y)

3301 - CLAY BELL, SIENNA (Y)

3306 - CLAY BELL, SIENNA (Y)

3311 - CLAY BELL, SIENNA (Y)

3316 - CLAY BELL, SIENNA (Y)

3321 - CLAY BELL, SIENNA (Y)

3326 - CLAY BELL, SIENNA (Y)

3331 - CLAY BELL, SIENNA (Y)

3336 - CLAY BELL, SIENNA (Y)

3341 - CLAY BELL, SIENNA (Y)

3346 - CLAY BELL, SIENNA (Y)

3351 - CLAY BELL, SIENNA (Y)

3356 - CLAY BELL, SIENNA (Y)

3361 - CLAY BELL, SIENNA (Y)

3366 - CLAY BELL, SIENNA (Y)

3371 - CLAY BELL, SIENNA (Y)

3376 - CLAY BELL, SIENNA (Y)

3381 - CLAY BELL, SIENNA (Y)

3386 - CLAY BELL, SIENNA (Y)

3391 - CLAY BELL, SIENNA (Y)

3396 - CLAY BELL, SIENNA (Y)

3401 - CLAY BELL, SIENNA (Y)

3406 - CLAY BELL, SIENNA (Y)

3411 - CLAY BELL, SIENNA (Y)

3416 - CLAY BELL, SIENNA (Y)

3421 - CLAY BELL, SIENNA (Y)

3426 - CLAY BELL, SIENNA (Y)

3431 - CLAY BELL, SIENNA (Y)

3436 - CLAY BELL, SIENNA (Y)

3441 - CLAY BELL, SIENNA (Y)

3446 - CLAY BELL, SIENNA (Y)

3451 - CLAY BELL, SIENNA (Y)

3456 - CLAY BELL, SIENNA (Y)

3461 - CLAY BELL, SIENNA (Y)

3466 - CLAY BELL, SIENNA (Y)

3471 - CLAY BELL, SIENNA (Y)

3476 - CLAY BELL, SIENNA (Y)

3481 - CLAY BELL, SIENNA (Y)

3486 - CLAY BELL, SIENNA (Y)

3491 - CLAY BELL, SIENNA (Y)

3496 - CLAY BELL, SIENNA (Y)

3501 - CLAY BELL, SIENNA (Y)

3506 - CLAY BELL, SIENNA (Y)

3511 - CLAY BELL, SIENNA (Y)

3516 - CLAY BELL, SIENNA (Y)

3521 - CLAY BELL, SIENNA (Y)

3526 - CLAY BELL, SIENNA (Y)

3531 - CLAY BELL, SIENNA (Y)

3536 - CLAY BELL, SIENNA (Y)

3541 - CLAY BELL, SIENNA (Y)

3546 - CLAY BELL, SIENNA (Y)

3551 - CLAY BELL, SIENNA (Y)

3556 - CLAY BELL, SIENNA (Y)

3561 - CLAY BELL, SIENNA (Y)

3566 - CLAY BELL, SIENNA (Y)

3571 - CLAY BELL, SIENNA (Y)

3576 - CLAY BELL, SIENNA (Y)

3581 - CLAY BELL, SIENNA (Y)

3586 - CLAY BELL, SIENNA (Y)

3591 - CLAY BELL, SIENNA (Y)

3596 - CLAY BELL, SIENNA (Y)

3601 - CLAY BELL, SIENNA (Y)

3606 - CLAY BELL, SIENNA (Y)

3611 - CLAY BELL, SIENNA (Y)

3616 - CLAY BELL, SIENNA (Y)

3621 - CLAY BELL, SIENNA (Y)

3626 - CLAY BELL, SIENNA (Y)

3631 - CLAY BELL, SIENNA (Y)

3636 - CLAY BELL, SIENNA (Y)

3641 - CLAY BELL, SIENNA (Y)

3646 - CLAY BELL, SIENNA (Y)

3651 - CLAY BELL, SIENNA (Y)

3656 - CLAY BELL, SIENNA (Y)

3661 - CLAY BELL, SIENNA (Y)

3666 - CLAY BELL, SIENNA (Y)

3671 - CLAY BELL, SIENNA (Y)

3676 - CLAY BELL, SIENNA (Y)

3681 - CLAY BELL, SIENNA (Y)

3686 - CLAY BELL, SIENNA (Y)

3691 - CLAY BELL, SIENNA (Y)

3696 - CLAY BELL, SIENNA (Y)

3701 - CLAY BELL, SIENNA (Y)

3706 - CLAY BELL, SIENNA (Y)

3711 - CLAY BELL, SIENNA (Y)

3716 - CLAY BELL, SIENNA (Y)

3721 - CLAY BELL, SIENNA (Y)

3726 - CLAY BELL, SIENNA (Y)

3731 - CLAY BELL, SIENNA (Y)

3736 - CLAY BELL, SIENNA (Y)

3741 - CLAY BELL, SIENNA (Y)

3746 - CLAY BELL, SIENNA (Y)

3751 - CLAY BELL, SIENNA (Y)

3756 - CLAY BELL, SIENNA (Y)

3761 - CLAY BELL, SIENNA (Y)

3766 - CLAY BELL, SIENNA (Y)

3771 - CLAY BELL, SIENNA (Y)

3776 - CLAY BELL, SIENNA (Y)

3781 - CLAY BELL, SIENNA (Y)

3786 - CLAY BELL, SIENNA (Y)

3791 - CLAY BELL, SIENNA (Y)

3796 - CLAY BELL, SIENNA (Y)

3801 - CLAY BELL, SIENNA (Y)

3806 - CLAY BELL, SIENNA (Y)

3811 - CLAY BELL, SIENNA (Y)

3816 - CLAY BELL, SIENNA (Y)

3821 - CLAY BELL, SIENNA (Y)

3826 - CLAY BELL, SIENNA (Y)

3831 - CLAY BELL, SIENNA (Y)

3836 - CLAY BELL, SIENNA (Y)

3841 - CLAY BELL, SIENNA (Y)

3846 - CLAY BELL, SIENNA (Y)

3851 - CLAY BELL, SIENNA (Y)

3856 - CLAY BELL, SIENNA (Y)

3861 - CLAY BELL, SIENNA (Y)

3866 - CLAY BELL, SIENNA (Y)

3871 - CLAY BELL, SIENNA (Y)

3876 - CLAY BELL, SIENNA (Y)

3881 - CLAY BELL, SIENNA (Y)

3886 - CLAY BELL, SIENNA (Y)

3891 - CLAY BELL, SIENNA (Y)

3896 - CLAY BELL, SIENNA (Y)

3901 - CLAY BELL, SIENNA (Y)

3906 - CLAY BELL, SIENNA (Y)

3911 - CLAY BELL, SIENNA (Y)

3916 - CLAY BELL, SIENNA (Y)

3921 - CLAY BELL, SIENNA (Y)

3926 - CLAY BELL, SIENNA (Y)

3931 - CLAY BELL, SIENNA (Y)

3936 - CLAY BELL, SIENNA (Y)

3941 - CLAY BELL, SIENNA (Y)

3946 - CLAY BELL, SIENNA (Y)

3951 - CLAY BELL, SIENNA (Y)

3956 - CLAY BELL, SIENNA (Y)

3961 - CLAY BELL, SIENNA (Y)

3966 - CLAY BELL, SIENNA (Y)

3971 - CLAY BELL, SIENNA (Y)

3976 - CLAY BELL, SIENNA (Y)

3981 - CLAY BELL, SIENNA (Y)

3986 - CLAY BELL, SIENNA (Y)

3991 - CLAY BELL, SIENNA (Y)

3996 - CLAY BELL, SIENNA (Y)

4001 - CLAY BELL, SIENNA (Y)

4006 - CLAY BELL, SIENNA (Y)

4011 - CLAY BELL, SIENNA (Y)

4016 - CLAY BELL, SIENNA (Y)

4021 - CLAY BELL, SIENNA (Y)

4026 - CLAY BELL, SIENNA (Y)

4031 - CLAY BELL, SIENNA (Y)

4036 - CLAY BELL, SIENNA (Y)

4041 - CLAY BELL, SIENNA (Y)

4046 - CLAY BELL, SIENNA (Y)

4051 - CLAY BELL, SIENNA (Y)

4056 - CLAY BELL, SIENNA (Y)

4061 - CLAY BELL, SIENNA (Y)

4066 - CLAY BELL, SIENNA (Y)

4071 - CLAY BELL, SIENNA (Y)

407



Contact

Kraus-Anderson

501 South Eighth Street
Minneapolis, MN 55404

www.krausanderson.com

Main 612-332-7281
Fax 952-881-8114



Dave Stalsberg

O: 612-255-2348

C: 651-245-8010



dave.stalsberg@krausanderson.com