

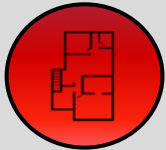
PRAIRIE LAKES CORPORATE CENTER I

11000 PRAIRIE LAKES DRIVE, EDEN PRAIRIE, MN



KRAUS-ANDERSON®
Realty Company

SPACE AVAILABLE



Multiple spaces available
- see site plan

OFFICE BUILDING



203,511 sf office complex
with incredible lake views

LOCATION

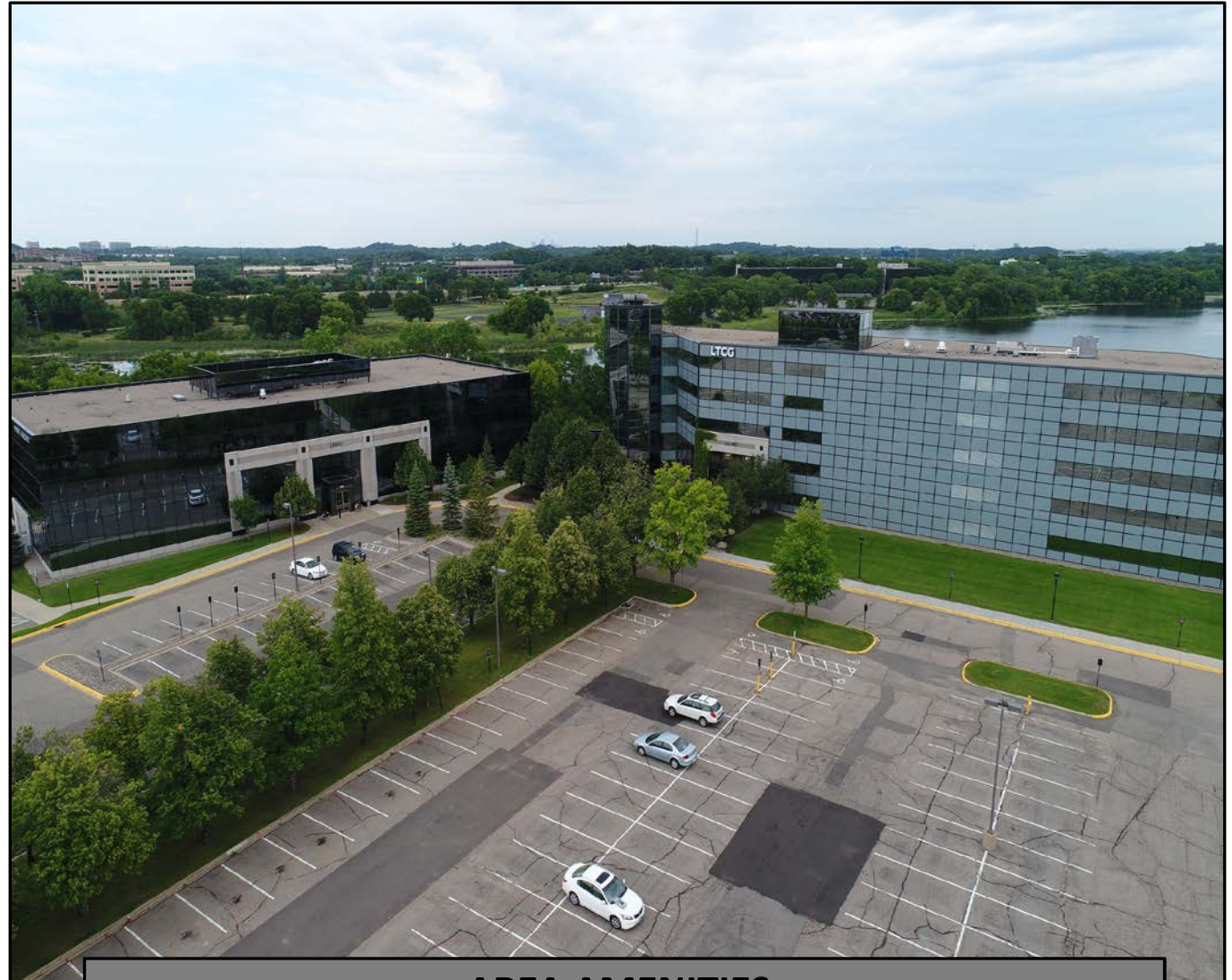


Located in the Eden
Prairie business district

BUILDING AMENITIES



Fitness center,
complimentary shared
conference room,
executive & underground
parking available



AREA AMENITIES



20 minute drive to the Minneapolis-
St. Paul International Airport



Great shopping close by.
Under 1 mile from the Eden
Prairie Center



40+ dining options within a 3 mile radius



20+ hotels within a 5 mile radius



Retail Aerial



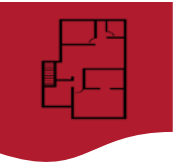


Aerial View



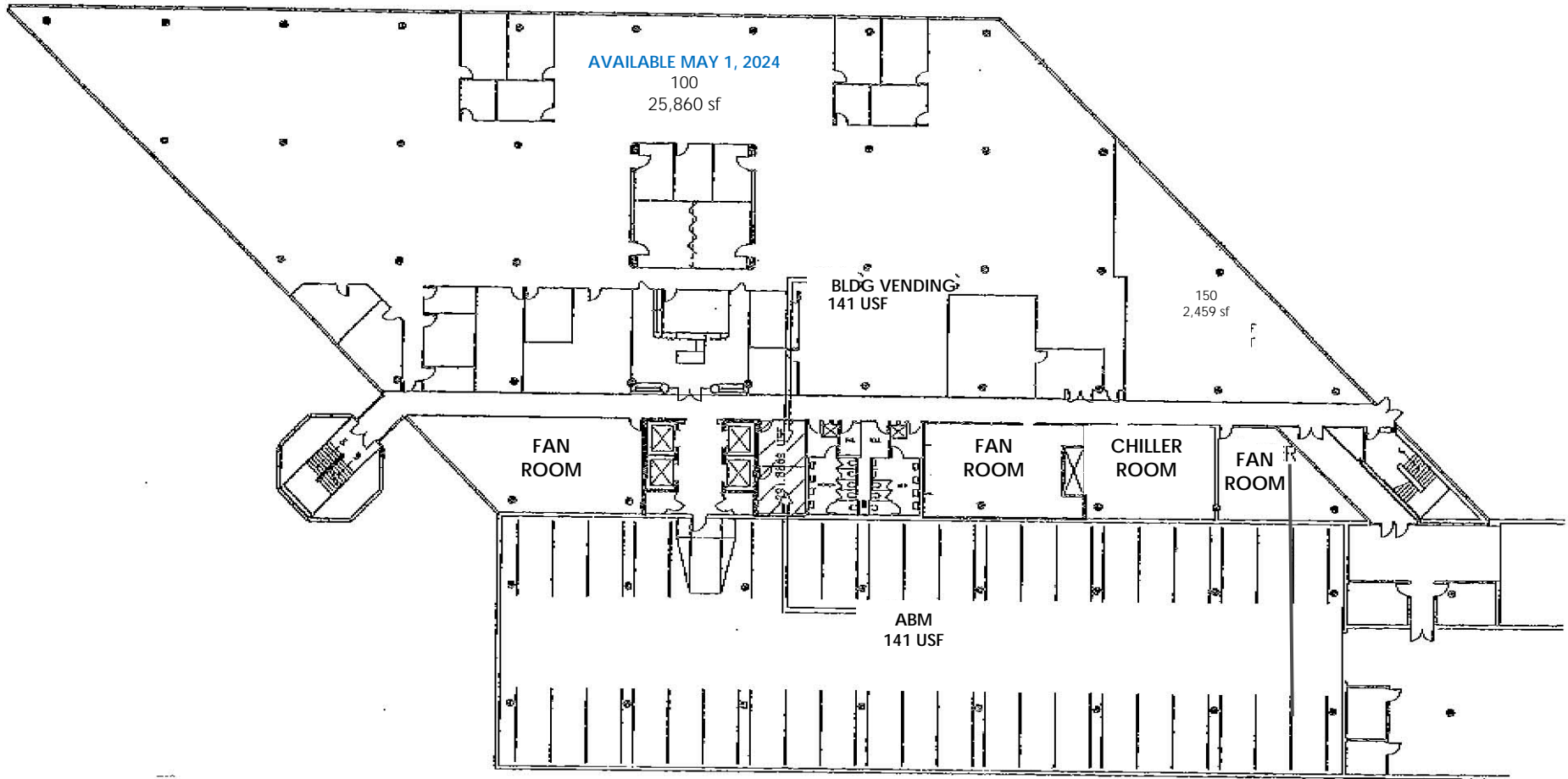
PRAIRIE LAKES CORPORATE CENTER I
EDEN PRARIE, MN

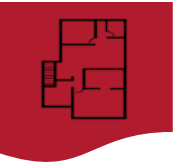




Site Plan

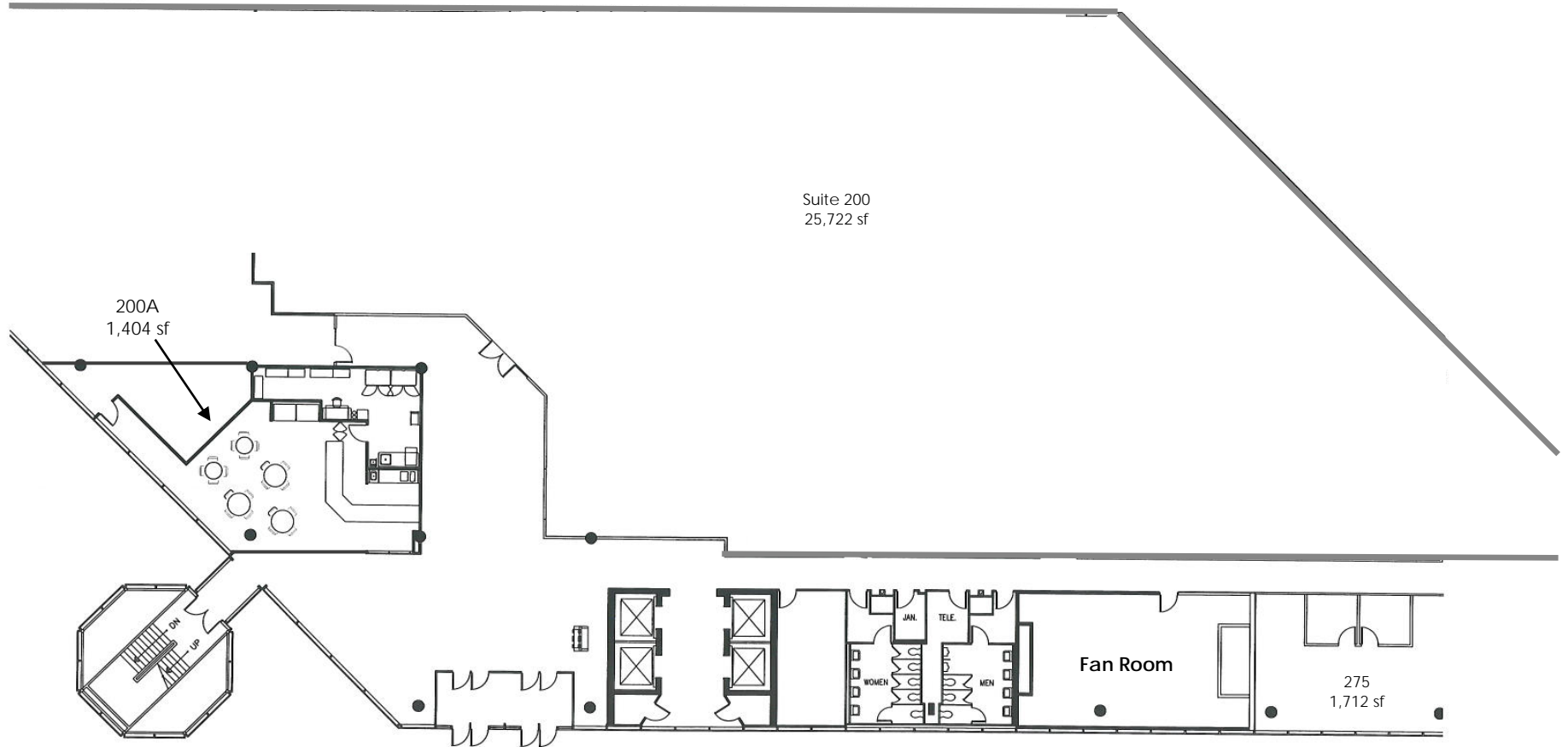
1st FLOOR

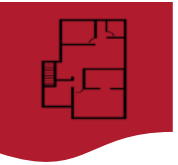




Site Plan

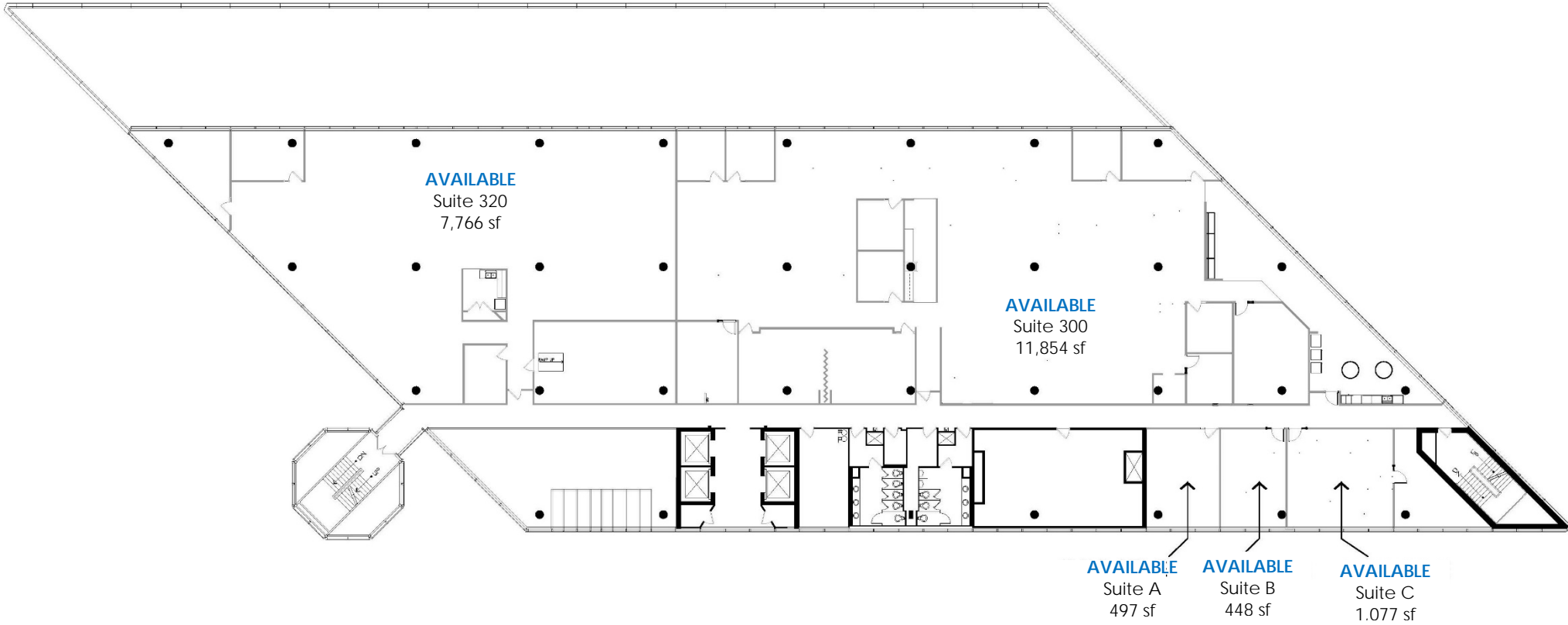
2nd FLOOR





Site Plan

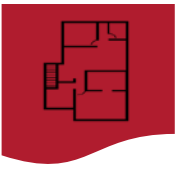
3rd FLOOR



11/11/22

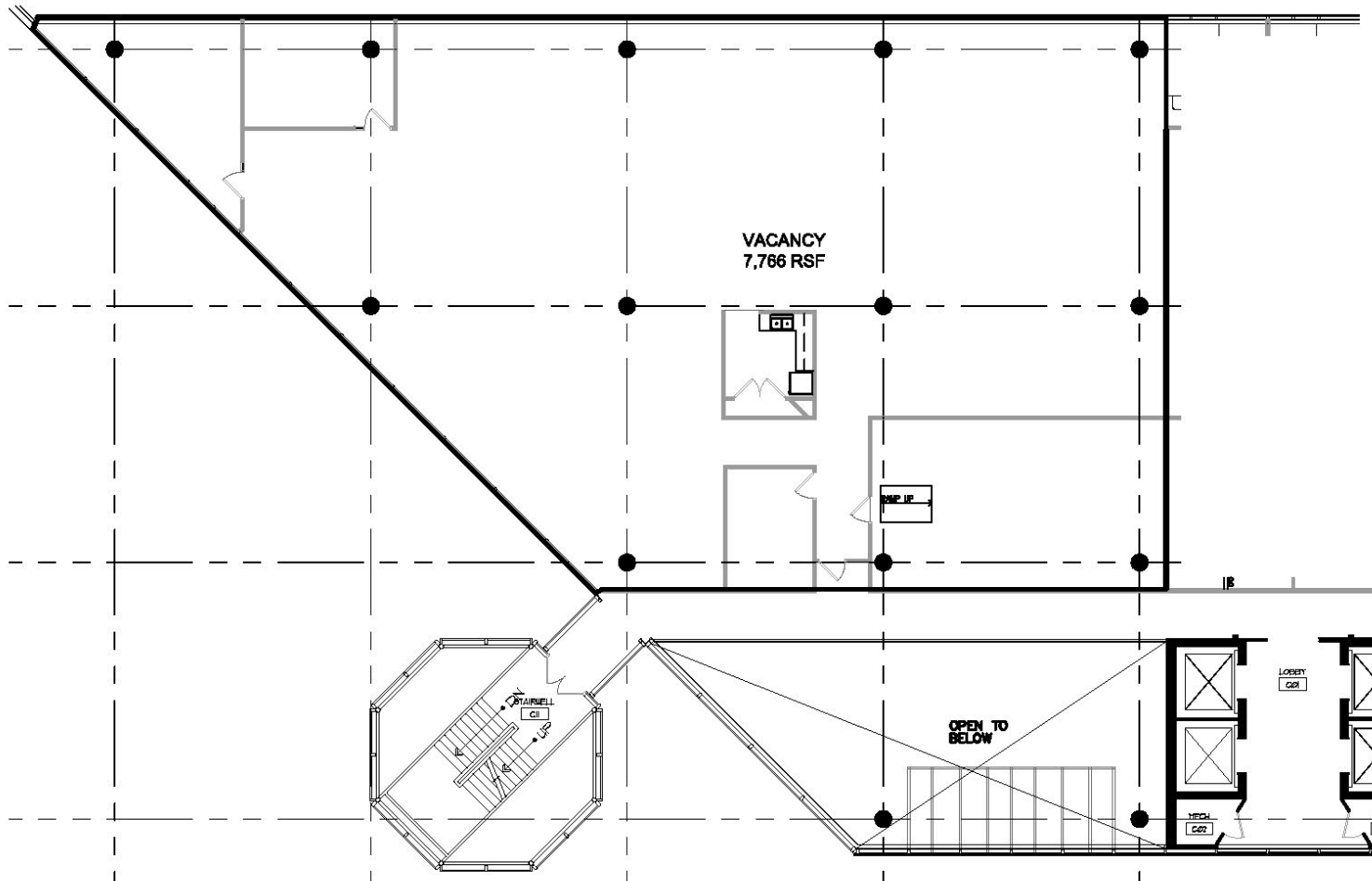
PRAIRIE LAKES CORPORATE CENTER I
11000 PRAIRIE LAKES DRIVE, EDEN PRAIRIE, MN

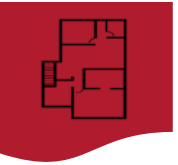




Site Plan

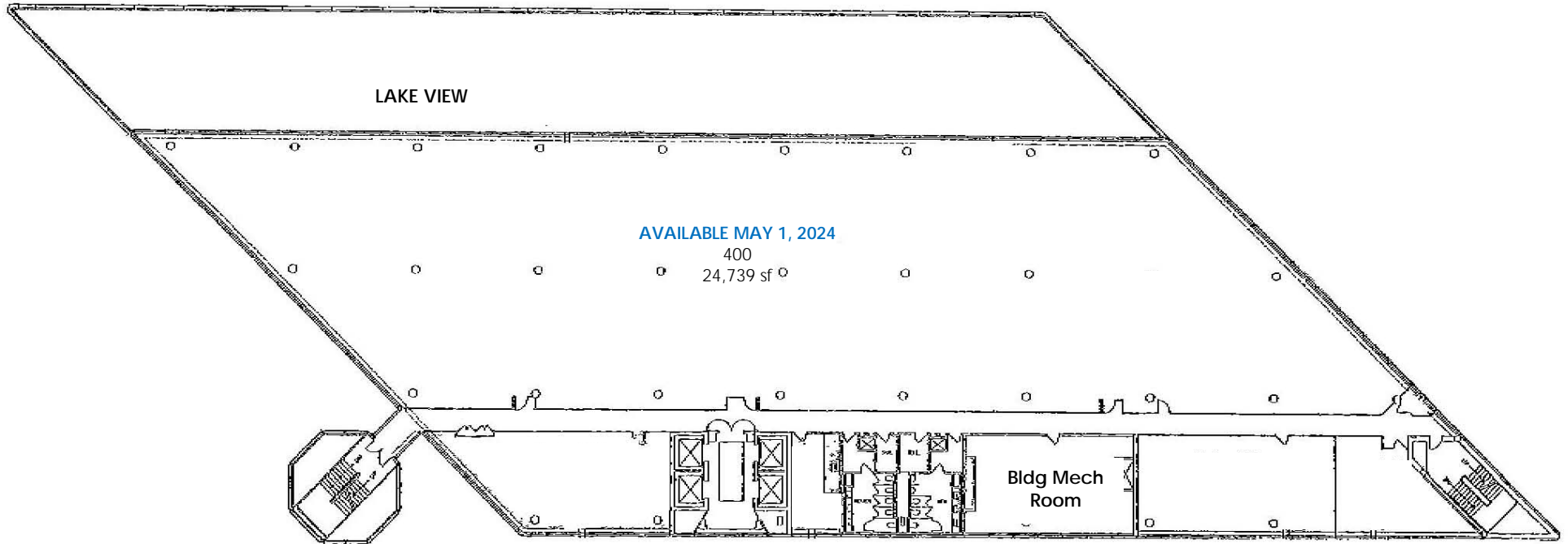
Suite 320
7,766 sf

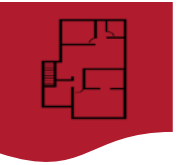




Site Plan

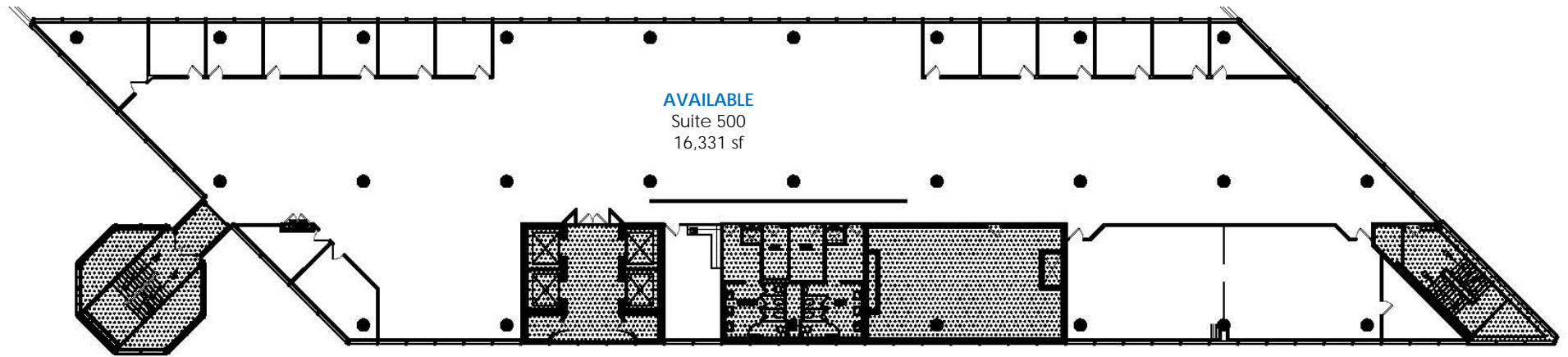
4th FLOOR

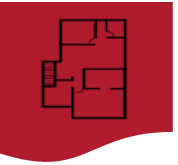




Site Plan

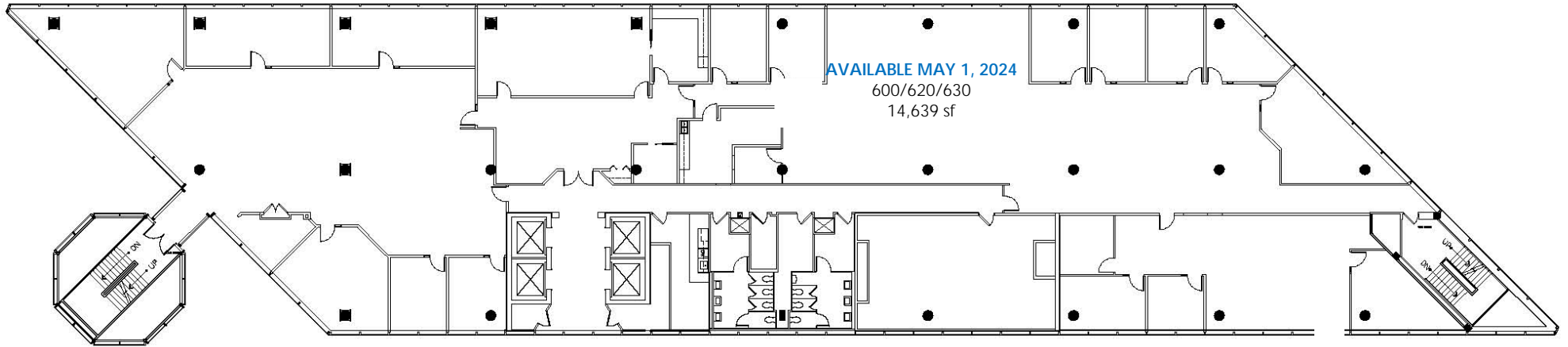
5th FLOOR





Site Plan

6th FLOOR



PRAIRIE LAKES CORPORATE CENTER I
11000 PRAIRIE LAKES DRIVE, EDEN PRAIRIE, MN





Contact

Kraus-Anderson

501 South Eighth Street
Minneapolis, MN 55404

www.krausanderson.com

Main 612-332-7281
Fax 952-881-8114



Dave Stalsberg



O: 612-255-2348

C: 651-245-8010



dave.stalsberg@krausanderson.com