

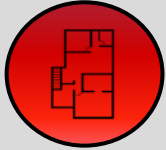
PRAIRIE LAKES CORPORATE CENTER II

11010 PRAIRIE LAKES DRIVE, EDEN PRAIRIE, MN



KRAUS-ANDERSON®
Realty Company

SPACE AVAILABLE



Multiple spaces available
– see site plan

OFFICE BUILDING



203,511 sf office complex
with incredible lake views

LOCATION

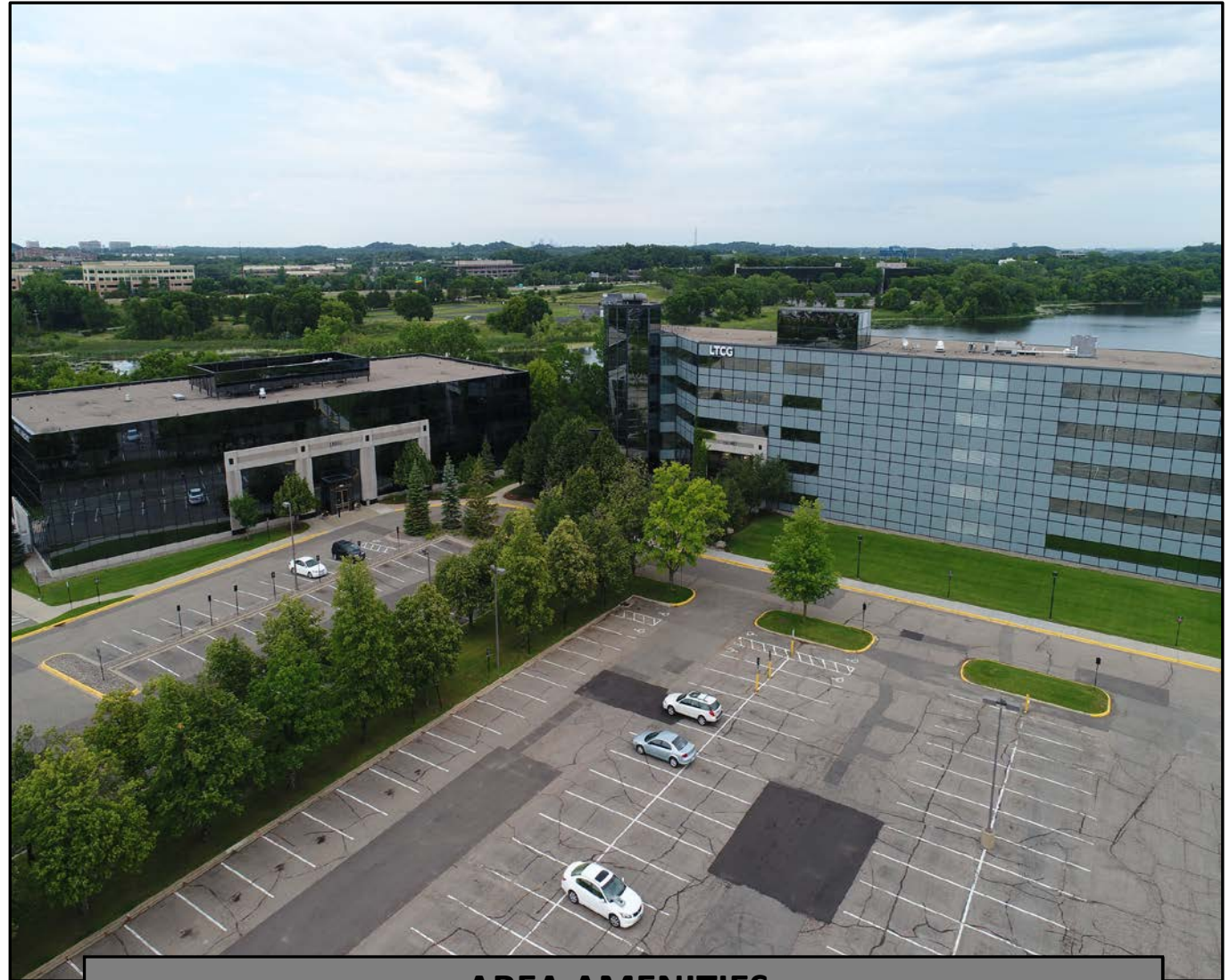


Located in the Eden
Prairie business district

PARKING



Fitness center,
complimentary shared
conference room,
executive & underground
parking available



AREA AMENITIES



20 minute drive to the Minneapolis-
St. Paul International Airport



Great shopping close by.
Under 1 mile from the Eden
Prairie Center



40+ dining options within a 3 mile radius



20+ hotels within a 5 mile radius



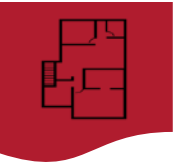
Retail Aerial





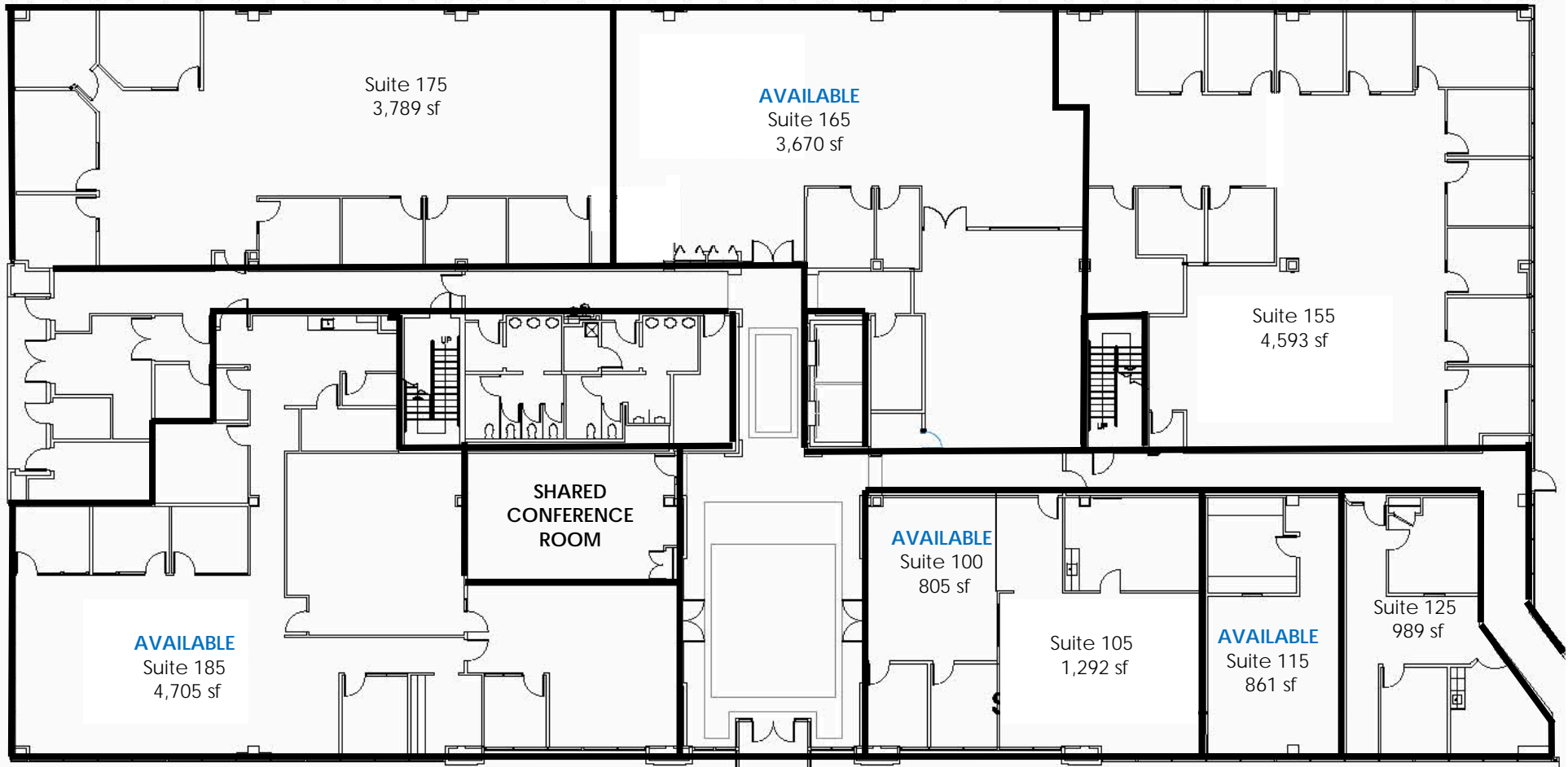
Aerial View

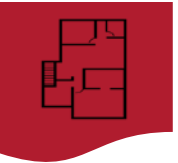




Site Plan

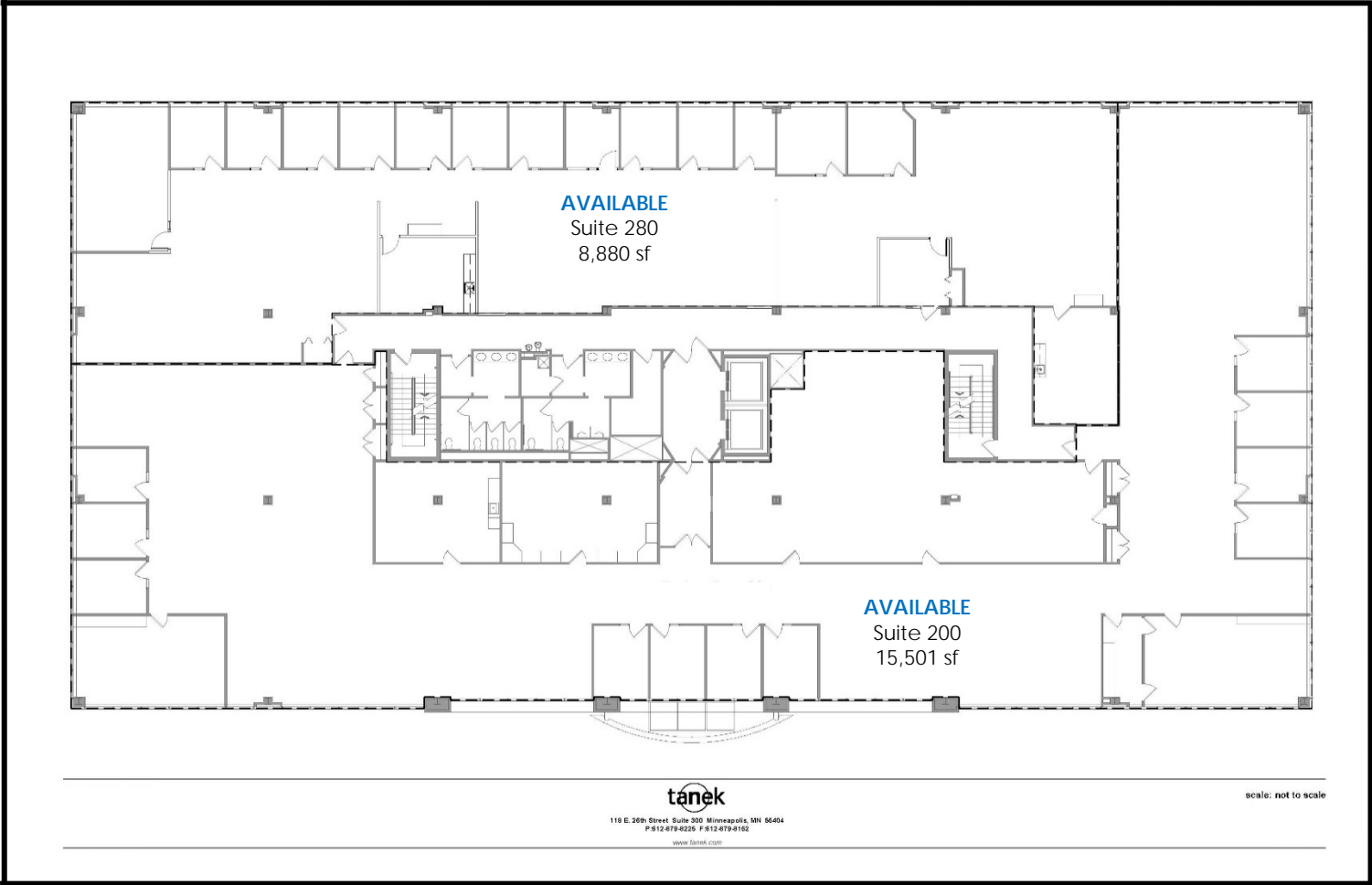
1st FLOOR

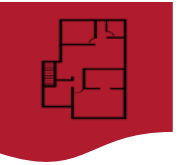




Site Plan

2nd FLOOR



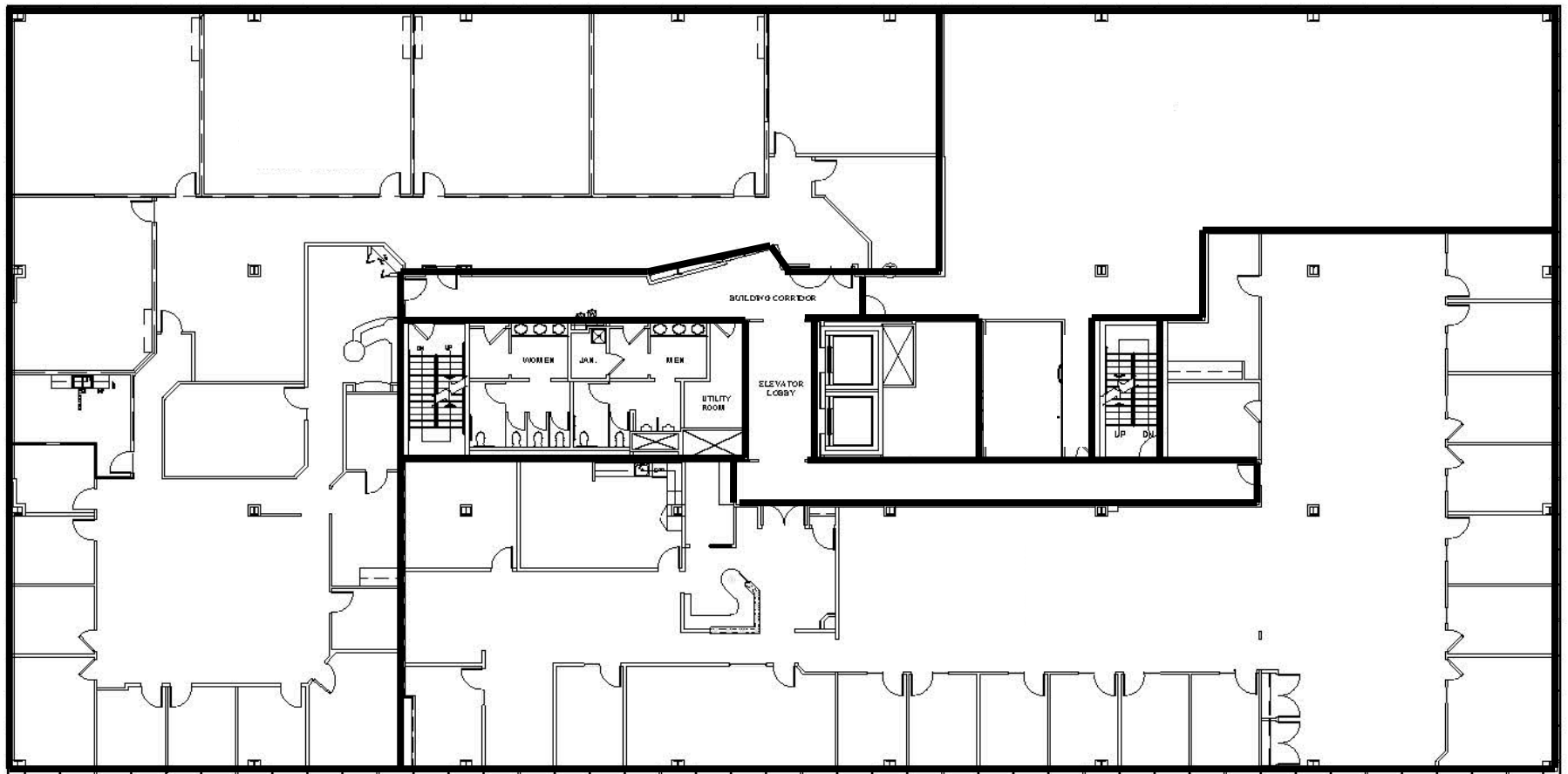


Site Plan

3rd FLOOR

Suite 300
10,363 sf

Suite 375
4,177 sf



Suite 350
9,811 sf



Contact

Kraus-Anderson

501 South Eighth Street
Minneapolis, MN 55404

www.krausanderson.com

Main 612-332-7281
Fax 952-881-8114



Dave Stalsberg



O: 612-255-2348

C: 651-245-8010



dave.stalsberg@krausanderson.com