



## SUSTAINABILITY SOLUTIONS

Environmental Progress +  
Client Support Services



KRAUS-ANDERSON® CONSTRUCTION COMPANY



Kraus-Anderson (KA) is a sustainability leader in construction and has made significant strides in building out its own internal sustainability practices and external services. We are excited to share our progress, sustainability goals and meaning, as well as highlight our sustainability services and how they might help improve project outcomes and long-term performance.

## EXPERIENCE SINCE 2008

**110+**

Completed Sustainability, Energy, and Electrification Assessments

**175**

Facilities Assessed

**5M**

Square Feet Assessed


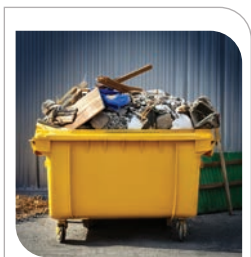
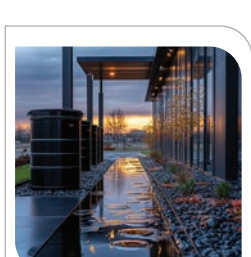
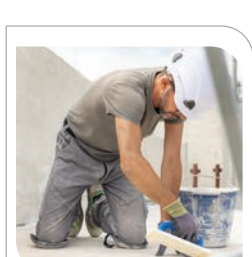
## SERVICES WE PROVIDE

- ASHRAE Level II Energy Audits
- Decarbonization / Electrification Assessments
- Inflation Reduction Act Guidance
- Organizational Sustainability Assessments
- Greenhouse Gas Accounting Consultation
- Green Building Certification Consultation

# KRAUS-ANDERSON’S ENVIRONMENTAL, SOCIAL, AND GOVERNANCE (ESG) PLANS + NEXT STEPS

Kraus-Anderson is a signatory on the **Contractor’s Commitment**, the construction industry’s sole standardized framework for systematically addressing the environmental and social impacts of construction activities.

The goal of the Contractor’s Commitment is to provide the tools and support network to help contractors become sustainable builders and construction managers. It is a formal, transparent framework that helps improve the sustainability outcomes of our construction projects and overall service offerings. The Contractor’s Commitment is structured across five categories – carbon, wellness, waste, water, and materials – which are graded on a good/better/best scale. KA is in the process of collecting our project data and evaluating our practices against the Contractor’s Commitment criteria and is committed to integrating the best practices outlined in the Commitment into our operations to continuously improve our sustainable construction practices.

|  |  |  |   |  |
|--|--|--|---|--|
|  <p><b>CARBON</b></p> <p>Implement practices that reduce greenhouse gas emissions from construction activities and operations.</p> |  <p><b>WELLNESS</b></p> <p>Ensure the wellness of construction employees through responsible materials selection and on-site safety practices.</p> |  <p><b>WASTE</b></p> <p>Minimize construction and demolition waste by developing responsible, project-specific waste management plans.</p> |  <p><b>WATER</b></p> <p>Promote the responsible use of water throughout a construction project.</p> |  <p><b>MATERIALS</b></p> <p>Advance the selection of healthy and sustainable construction materials.</p> |
|--|--|--|---|--|

- 1. In 2025, first ESG plan to be completed
- 2. Scope 3 emissions and supply chain tracking



# KRAUS-ANDERSON'S COMMITMENTS + GOALS



## ON OUR CONSTRUCTION SITES

- » Implement strategies to reduce electric and fuel consumption
- » Identify strategies to maximize reuse and recycling efforts before demolition
- » Identify material alternatives to reduce embodied carbon of construction materials

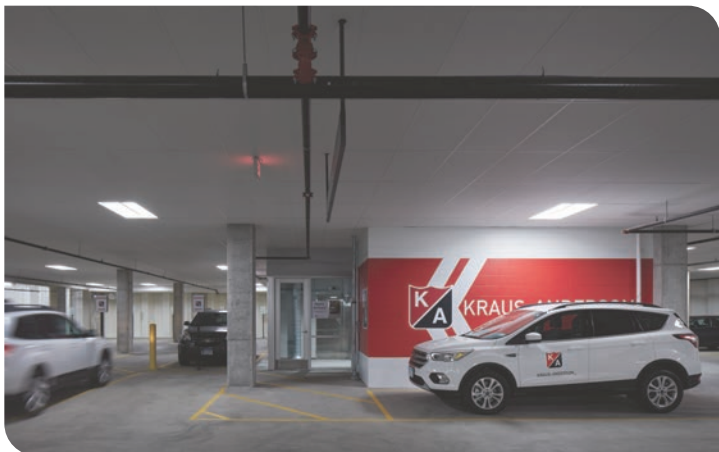
**GOAL:** Achieve net zero emissions on controlled sites by 2040



## IN OUR BUILDINGS

- » Develop capital plans that beneficially electrify buildings
- » Reduce the energy consumption and carbon intensity of our portfolio

**GOAL:** Achieve net zero office operations by 2040



## FOR OUR FLEET

- » Create a pilot program for battery and plug-in hybrid electric vehicles

**GOAL:** Grow our program to achieve net zero fleet emissions by 2040

# SUSTAINABILITY SERVICES ► 2024 IMPACT

## By the Numbers



### Total Assessments | 29

- Energy Audits | 9
- Sustainability Assessments | 6
- Electrification Assessments | 12
- Energy Grant Submittals | 2



### Spaces

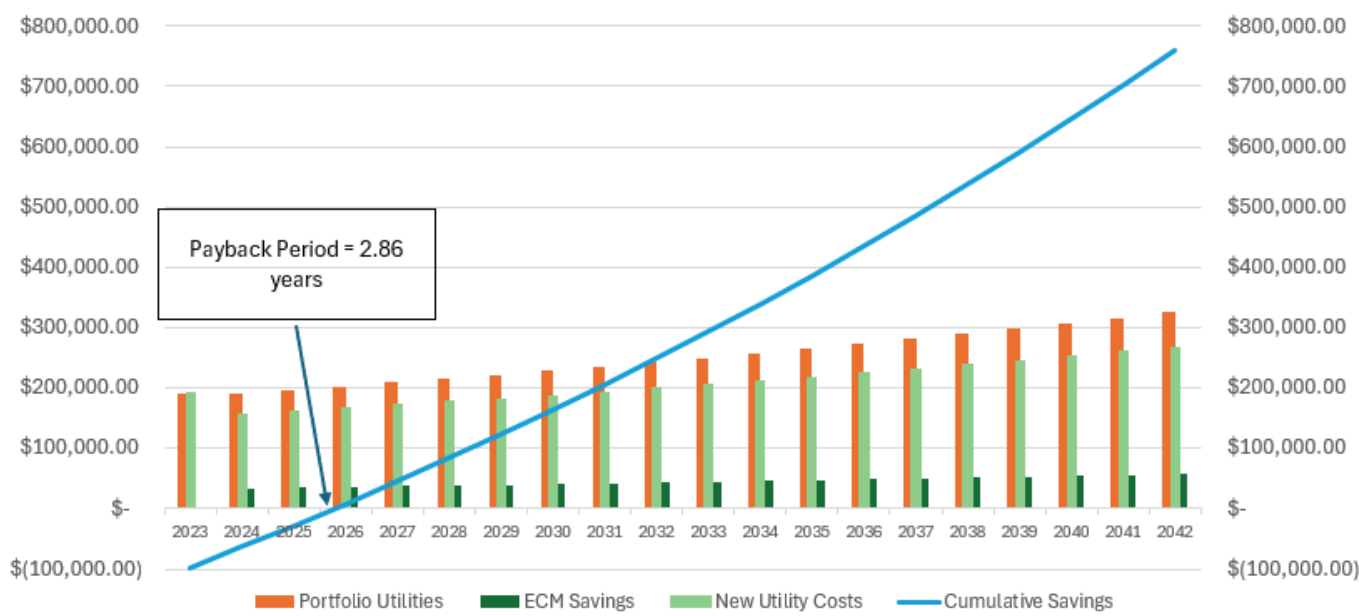
- Facilities | 29
- Square Feet | 1,500,000
- Average SF | 52,000



### Typical Impact

- Utility Savings | \$10,000
- Utility Incentives | ~\$9,000
- Payback Period | 3.84 years

## FINDINGS: Client Example of Portfolio Utility Cost + Expected Savings



# SUSTAINABILITY SOLUTIONS FOR NEW CONSTRUCTION



- Sustainability and energy-focused design reviews
- Energy conservation measure identification
- Conceptual-level energy modeling
- Conceptual-level solar PV analysis



- Assist with material selection of high-carbon materials
- Implement site-focused fuel, water, and electricity reduction strategies



- Develop project-specific waste plans to maximize reuse and salvage reuse
- Improve diversion outcomes beyond sorting facility percentages



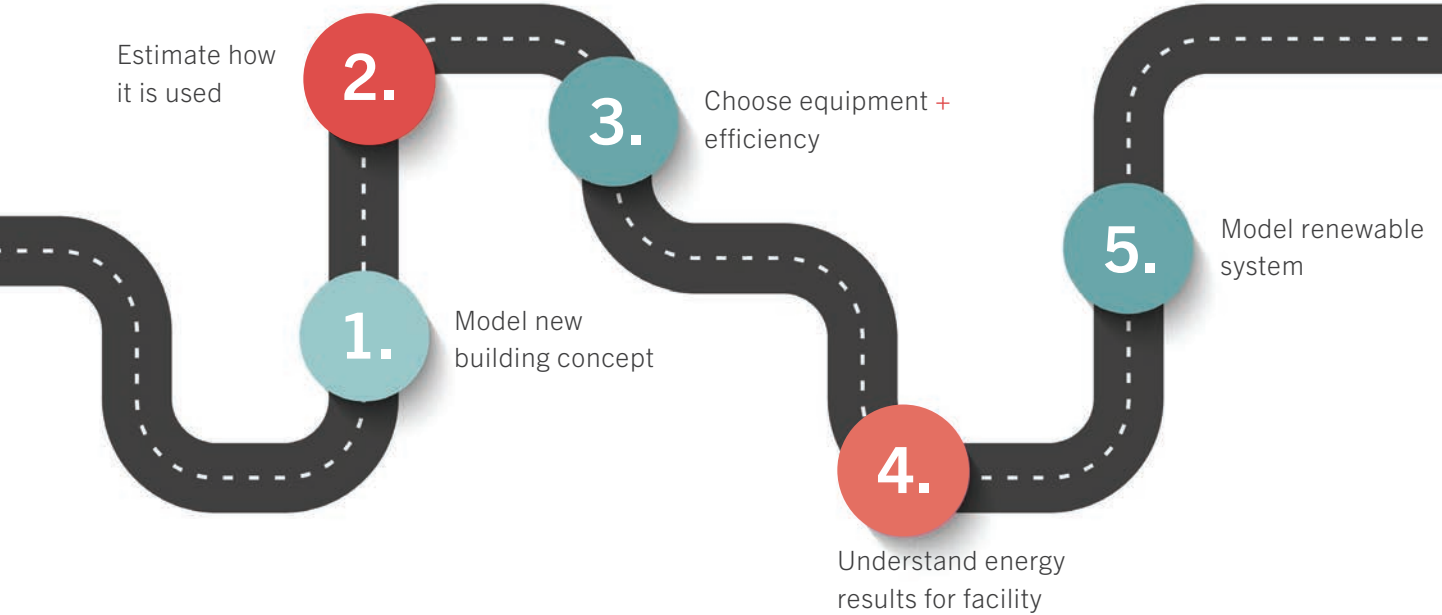
- Advise on the IRA requirements and project applicability
- Lead the utility incentive application process
- Identify and assist with grant writing for local, municipality, or state energy programs



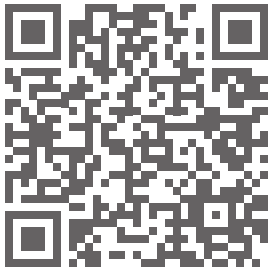
- LEED for new construction project management
- ENERGY STAR for multifamily certification
- And more green building rating systems

# NEW CONSTRUCTION SUSTAINABILITY EXAMPLE

## Net Zero is Possible: Chart Your Path to Net Zero



**RESULT:** Building consumption is less than solar production



Scan the QR code to find out about the sustainability solutions KA implemented in its headquarters building.

# SUSTAINABILITY SOLUTIONS FOR EXISTING BUILDINGS



- ASHRAE Level II energy audits
- Decarbonization and electrification assessments
- Solar modeling and cost estimating
- Energy benchmarking



- LEED for existing buildings: Operations and Maintenance
- ENERGY STAR certification preparation



- Energy grant writing and application support
- Utility incentive custom incentive applications
- Inflation Reduction Act guidance

---

“You can’t manage what you don’t measure.

~ Peter Drucker

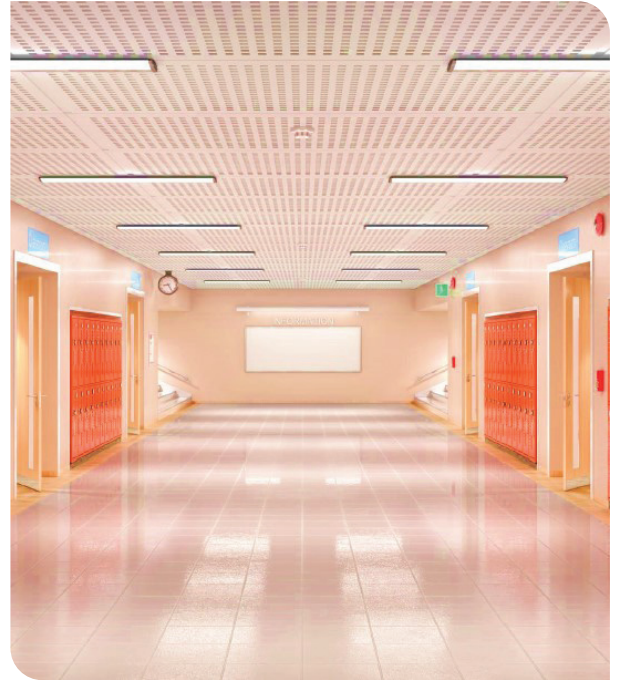


# EXISTING BUILDINGS SUSTAINABILITY EXAMPLE

## Understand Your Energy-Savings Potential

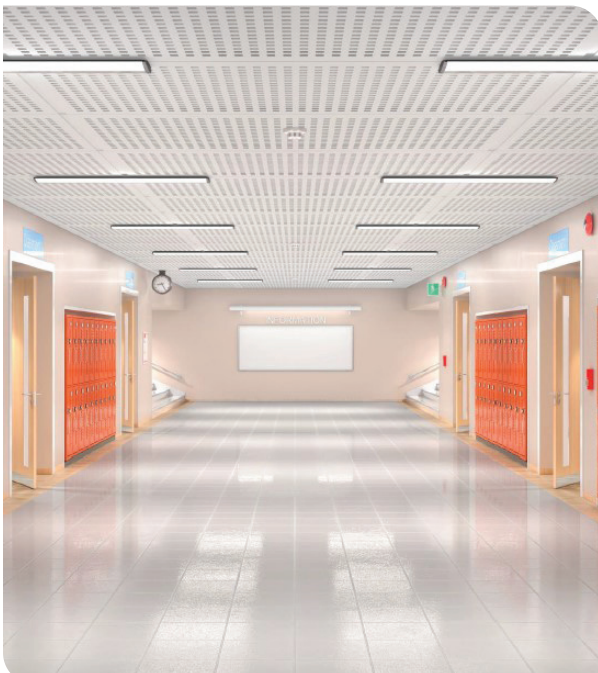
### The Ask:

- New LED lighting in the high school
- New LED lighting in the elementary school
- New windows in select classrooms in the elementary school
- Pursue the North Dakota State Energy Grant Program to maximize funding



### What we did:

- Identified a different energy program to maximize funding
- Calculated the anticipated energy savings from each measure
- Optimized the lighting scope to maximize grant funding within the grant requirements
- For 12 hours of time, we helped the school district evaluate, calculate, and apply for \$35,000 in grant funds for its projects



# ENTERPRISE-LEVEL SUSTAINABILITY SOLUTIONS

## Organizational Analysis

1.

Sustainability  
Program  
Evaluation

*Human Health and  
Wellness Focus*

2.

Greenhouse  
Gas Accounting  
Support

*Scope 1, Scope 2,  
and Scope 3*

3.

Portfolio-level:

- *Green Building certification*
- *Existing building analysis*
- *Decarbonization planning*

## Indoor Air Quality (IAQ) Matters

*A Lawrence Berkeley National Laboratory study found that businesses could save \$58B in lost sick time and an additional \$200B in work performance through IAQ improvements alone.*

“ Sustainability lies at the intersection of **Innovation** and **Responsibility**.

~ Bill Gates

---

### How Can I Help?

Kevin Bright, LEED Fellow, CEM, LFA  
Sustainability Manager  
651-396-9728  
[kevin.bright@krausanderson.com](mailto:kevin.bright@krausanderson.com)







## MINNESOTA

### MINNEAPOLIS

501 South Eighth Street  
Minneapolis, MN 55404  
612-332-7281

### BEMIDJI

206 Beltrami Avenue  
Bemidji, MN 56601  
218-759-0596

### DULUTH

2000 West Superior Street  
Suite 101  
Duluth, MN 55806  
218-722-3775

### ROCHESTER

502 2nd Avenue SW  
Rochester, MN 55902  
507-226-8690

## ARIZONA

### PHOENIX

1401 N. 24th Street  
Phoenix, AZ 85008  
480-899-3240  
ROC 102058

## IOWA

### DES MOINES

100 Court Avenue  
Des Moines, IA 50309

## NORTH DAKOTA

### BISMARCK

1815 Schafer Street  
Suite 200  
Bismarck, ND 58501  
701-989-7150

### FARGO

1100 NP Avenue  
Suite 201  
Fargo, ND 58102  
701-629-0699

## WISCONSIN

### MADISON

151 East Wilson Street  
Suite 100  
Madison, WI 53703  
608-838-5444

### MILWAUKEE

126 North Jefferson Street  
Suite 402  
Milwaukee, WI 53202  
414-216-7249



[www.krausanderson.com](http://www.krausanderson.com)